

SnapMax

The mini greenhouse for vines

Invented in 1995, SnapMax saves growers time and money, whilst maximising vine growth for earlier returns. SnapMax is supplied pre-assembled so installation takes just seconds.



Now with adjustable length!



NEW dripper wire strap for high wind sites, plus weedmats for better growth.



New Benefit for growers

SnapMax now has built in 50mm adjustability for ground/wire height variation.

A perfect fit every time.

SnapMax sizes

900 - 950mm
1000 - 1050mm
1100 - 1150mm
1200 - 1250mm

Other sizes made to order.

The benefits of SnapMax Vineguards.

- Healthier, faster growth straight to the wire
- Pre-assembled for super-fast installation
- Now comes with extra 50mm for ground/wire variation
- Translucent for drive-by vine monitoring and inspection
- Supportive 'U' saddle allowing uni or bi-lateral training
- Micro ventilation for vine health
- Protection from deer, kangaroos, hares and herbicide
- Unique durable double tab locking seal
- Trains vines straight to the wire
- Reusable and recyclable at end of life

Strongly recommended

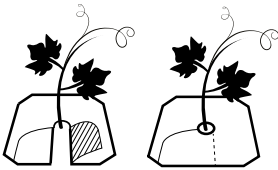
"For us, they are the best guards we've tried. We get nice growth out of them – it's a good environment inside, they grow well. The strength of the plastic means we can use them for several years, as we are doing lots of replanting. They're easy to use and they stay on really well."

Andrew George,
Vineyard Manager, Yarra Yering

WeedMat (optional)

Global Green now supplies the GreenMat® for weed prevention and moisture retention inside the guard.

Installation

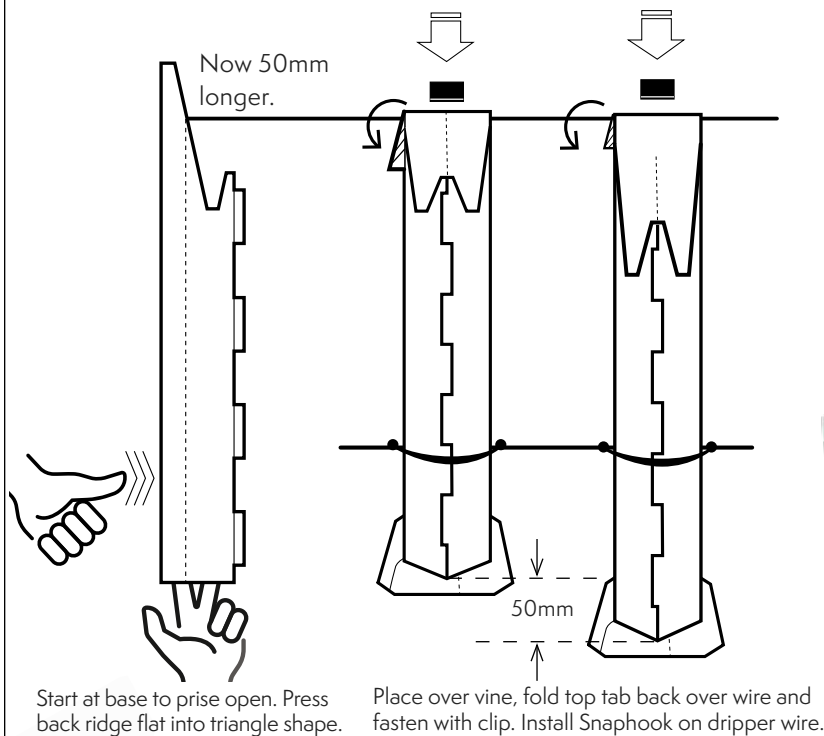


Dripper Strap (optional)

The new Snaphook strap secures the base to the dripper wire.



SnapMax easy to install - A perfect fit



Proven performer

"Relying on Snapmax for many years, CMV Farms planted an extra 120,000 vines in 2018 using SnapMax 1100mm VineGuards. We have been using Snapmax for the last 5 years. We have tried other guards but haven't had the success that we do with SnapMax, they out-performed the other guards. Snapmax are very clear, you can see the vine and we get uniform growth. The vine is up and along the wire well inside six months."

Phil Reilly, Vineyard Manager, CMV Farms



By **Globalgreen**
environmental

For more information,
call (03) 9555 5500 or email, info@globalgreen.com.au
www.globalgreen.com.au

