

# Revegetation & Erosion Control Product Range

Global Green is an Australian company dedicated to designing and manufacturing innovative products to protect the environment, support revegetation and erosion control.

SPRING | SUMMER



For more information (03) 9555 5500  
[info@globalgreen.com.au](mailto:info@globalgreen.com.au)  
[www.globalgreen.com.au](http://www.globalgreen.com.au)

**Globalgreen**  
environmental



## Pioneers in Sustainable Solutions

Globalgreen Environmental is a leader in sustainable land management solutions, dedicated to addressing and mitigating environmental challenges faced by communities, local governments, and organisations across Australia. Globalgreen has created and supplies eco-friendly products that foster biodiversity, prevent soil erosion, and support land rehabilitation. Combining science-backed solutions with a commitment to environmental stewardship, Globalgreen has established itself as a trusted partner in the environmental sector.

### Our Mission and Vision

Globalgreen's mission is to make a positive environmental impact by developing products that contribute to a healthier, greener planet. With practical tools and resources, Globalgreen empowers communities and organisations to restore and protect ecosystems, increase biodiversity, and create a lasting legacy of sustainability. Its vision revolves around thriving local ecosystems, supported by sustainable practices that benefit both people and the environment. From coastal restoration and bushland regeneration to urban revegetation, Globalgreen offers products adaptable to diverse landscapes and climates.

### Comprehensive Product Range

Globalgreen Environmental offers products carefully designed for ecological restoration, including:

- **JutePro Erosion Control Matting:** Biodegradable matting that prevents soil erosion, protects waterways, and stabilises slopes.
- **GreenPOD Enviro Seedling Guards:** Biodegradable guards that support young plants and enhance soil health.
- **BamPRO Sawn Bamboo:** strong, flexible and long lasting Hardwood stake alternative..

### Expertise and Commitment to Sustainability

With years of experience and a strong commitment to sustainable practices, Globalgreen collaborates with environmental scientists, ecologists, and local councils to ensure high standards of environmental responsibility. By prioritising natural materials and eco-friendly design, Globalgreen supports landscape rehabilitation while reducing synthetic waste. Products are tested to meet quality and environmental standards.

### Partnering and collaboration

Globalgreen partners with local governments, Landcare groups, and community organisations across Australia. Its services, from personalised consultations and site visits to sample products and assessments, enable tailored solutions for each project. Through these collaborations, Globalgreen actively supports projects that protect and revitalise landscapes for future generations.

Globalgreen Environmental is committed to advancing sustainability and ecological resilience. With a broad product range and a strong foundation in environmental science, Globalgreen is prepared to meet Australia's evolving environmental conservation challenges, one project at a time.



## How to Order from Globalgreen Environmental

Ordering from Globalgreen Environmental is designed to be simple, efficient, and tailored to the unique needs of your environmental projects. As a leading provider of sustainable land management solutions, we aim to make the purchasing process seamless, whether you're sourcing erosion control, revegetation, or habitat restoration products. Our team is ready to assist you with selecting the best options to achieve your goals while supporting ecological sustainability.

### Step 1: Explore Our Product Range

To begin, visit our website at [www.globalgreen.com.au](http://www.globalgreen.com.au), where you'll find detailed information on our eco-friendly product line.

Each product page provides specifications, benefits, and ideal use cases, helping you make an informed decision. For larger projects or unique environmental needs, reach out to our team for a personalised recommendation.

### Step 2: Request a Quote or Sample

Once you've identified the products that best fit your project, you can request a quote directly through our website or by contacting our customer service team at **03 9555 5500** or [info@globalgreen.com.au](mailto:info@globalgreen.com.au). If you're interested in assessing the product quality before ordering, samples of certain items, like our JutePro Matting and GreenPOD Seedling Guards, can be provided upon request. This allows you to see firsthand how our products perform in your specific environment.

### Step 3: Place Your Order

After reviewing the quote and determining your needs, you can proceed with your order. Our team will confirm the product quantities, shipping details, and timelines to ensure your project is supplied promptly. Globalgreen strives to provide flexible order options, accommodating both small-scale orders for trial projects and large-scale shipments for extensive land rehabilitation.

### Step 4: Delivery and Ongoing Support

Globalgreen coordinates delivery to your specified site, ensuring that your products arrive securely and on schedule. If you have questions about product installation or maintenance, our team offers ongoing support to help you maximise the impact of your investment in environmental solutions.

### Partnering for Success

At Globalgreen, we value collaboration. Should you need a site assessment or project consultation, we're available to help. From placing an initial order to implementing our solutions on the ground, we are committed to providing you with the tools and guidance needed to achieve sustainable, effective results. To get started, contact us at **03 9555 5500** or visit [www.globalgreen.com.au](http://www.globalgreen.com.au) for more information on ordering and product availability.

## greenPOD: Paper Treeguard

greenPOD – the natural way to protect and grow healthy seedlings

- Made from heavy duty, 100% recycled paper board, greenPOD doesn't have plastic coatings, so it protects the surrounding environment
- Life expectancy of 18 months+, recycled paper breaks down during growth of seedling
- greenPOD's natural colour reduces the visual impact
- greenPOD shelters seedling from intense weather and heat fluctuations yet provides the perfect growing environment
- Simple and easy to install
- Protects from browsing animals and herbicide spray.

<b>GREENPOD330</b>	greenPOD Paper treeguard - 330mm high x 105mm dia	50pk
<b>GREENPOD400</b>	greenPOD Paper treeguard - 400mm high x 137mm dia	25pk
<b>GREENPOD450</b>	greenPOD Paper treeguard - 450mm high x 170mm dia	25pk
<b>GREENPOD600</b>	greenPOD Paper treeguard - 600mm high x 210mm dia	25pk
<b>GREENPOD1000</b>	greenPOD Paper treeguard - 1000mm high x 210mm dia	10pk
<b>GREENPOD1200</b>	greenPOD Paper treeguard - 1200mm high x 260mm dia	10pk



## greenMAT: Weedmats

GreenMAT weedmat, made from recycled paper. Designed with a central slit, and liftable flap for easy use for the plant and slots for stake positions. Much like the Jute option below.

<b>GREENMAT220</b>	Greenmat 220x22mm Recycled paper	50pk
<b>GREENMAT365</b>	Greenmat 365x330mm Recycled paper	25pk



## JutePro Weedmats

Biodegradable weedmats made from jute. Designed with a central slit for the plant and 3 slots for stake positions. All 750gsm weight.

<b>JUTEPRO225</b>	JutePRO Weedmats 225mm x 225mm	100pk
<b>JUTEPRO370</b>	JutePRO Weedmats 370mm x 370mm	100pk
<b>JUTEPRO600</b>	JutePRO Weedmat - 600mm x 600mm	50pk
<b>JUTEPRO900</b>	JutePRO Weedmat - 900mm x 900mm	25pk



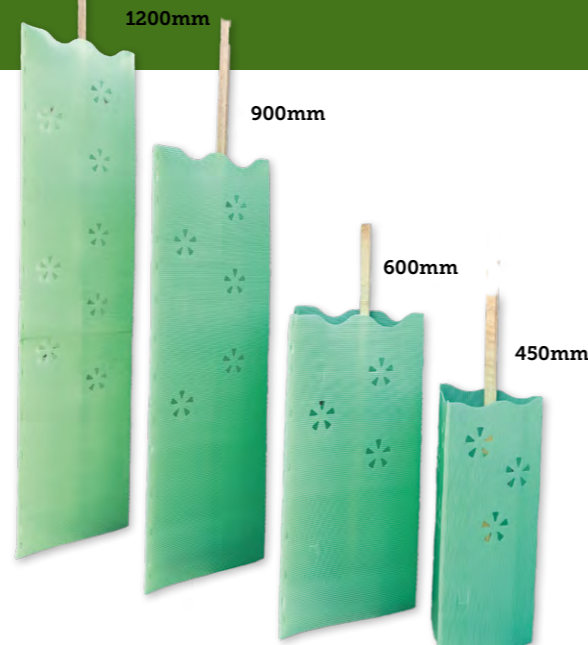


# Revegetation

## EzyGuard: Reusable Treeguard

Welded seam ready to pop open and insert stake. EzyGuard's unique patented InstaLOCK clamps the stake secure to prevent spinning when using a normal hardwood stake, saving the cost of custom-made stakes as used on conventional flute guards.

Features an additional stake slot to secure the guard when using bamboo stake or in very high wind areas and potential animal rubbing.



<b>EZYGuard450</b>	Treeguard 450Hx200mm sides	100pk
<b>EZYGuard600</b>	Treeguard 600Hx300mm sides	100pk
<b>EZYGuard900</b>	Treeguard 900Hx300mm sides	25pk
<b>EZYGuard1200</b>	Treeguard 1200Hx300mm sides	25pk

## Hardwood Stakes

<b>HW752518</b>	Hardwood Stakes 75cm 25x18mm	10pk
<b>HW902518</b>	Hardwood Stakes 90cm 25x18mm	10pk
<b>HW1202518</b>	Hardwood Stakes 120cm 25x18mm	10pk
<b>HW2105050</b>	Hardwood Stakes 120cm 50x50mm	1
<b>HW1352518</b>	Hardwood Stakes 135cm 25x18mm	10pk
<b>HW1502518</b>	Hardwood Stakes 150cm 25x18mm	10pk
<b>HW1503838</b>	Hardwood Stakes 150cm 38x38mm	1
<b>HW1505050</b>	Hardwood Stakes 150cm 50x50mm	1
<b>HW1803838</b>	Hardwood Stakes 180cm 38x38mm	1
<b>HW1805050</b>	Hardwood Stakes 180cm 50x50mm	1
<b>HW2103838</b>	Hardwood Stakes 210cm 38x38mm	1
<b>HW2405050</b>	Hardwood Stakes 240cm 50x50mm	1



## Tree Ties

<b>TIEJUTES30</b>	Jute tree tie 50mm x 30m roll
<b>TIEPOLY5100</b>	Poly tree tie 50mm x 100m roll



## BamPro Stake

Stakes milled from large bamboo, sawn and pointed. Stakes have a hardwood stake profile as an alternative to the hardwood stakes.

<b>BAMPRO752010</b>	Bamboo Stake 75cm 20x10mm	100pk
<b>BAMPRO902010</b>	Bamboo Stake 90cm 20x10mm	100pk

<b>BAMPRO751220</b>	Bamboo Stake 75cm 12x20mm	25pk
<b>BAMPRO751525</b>	Bamboo Stake 75cm 15x25mm	25pk
<b>BAMPRO901220</b>	Bamboo Stake 90cm 12x20mm	25pk
<b>BAMPRO901525</b>	Bamboo Stake 90cm 15x25mm	25pk
<b>BAMPRO1201525</b>	Bamboo Stake 120cm 15x25mm	25pk
<b>BAMPRO1351525</b>	Bamboo Stake 135cm 15x25mm	25pk
<b>BAMPRO1501525</b>	Bamboo Stake 150cm 15x25mm	25pk
<b>BAMPRO1801525</b>	Bamboo Stake 180cm 15x25mm	25pk



# Erosion & Weed Control

## JutePro: Thick-Mat

JutePro Thick is the robust weed and erosion control geotextile blanket made from natural Jute fibres. Jute (Corchorus spp.) is a plant found on the sub-continent and where it is sustainably farmed.

The superior grade of jute fibre is cleaner and improves the tensile strength of the matting, improving its performance on steep embankments and in storm events. Being denser, it provides good weed suppression, erosion control and moisture retention for better plant establishment and survival.

JutePro Thick is a roll out mulch barrier, providing weed suppression and moisture retention to enhance plant establishment, while protecting the topsoil from erosion.

JutePro Thick is made from selected, long clean Jute fibres to add strength and longevity.

JutePro is 100% organic and biodegrades over time.

## Application

Natural mulch mat for weed and erosion control, ideal for:

- Slopes up to 1:1 grade
- Roadsides and open spaces
- Revegetation areas and garden beds
- Wetlands, Ephemeral zones, and riparian batters
- Coastal and high wind sites
- Water velocities up to 1.8 metres per second

## Product Range

<b>JUTEPROTM750S</b>	JutePro Thick-mat Roll - slit 1.83wide x 25m long (45.75m <sup>2</sup> ) Weight 750gsm
<b>JUTEPROTM750</b>	JutePro Thick-mat Roll - unslit 1.83wide x 25m long (45.75m <sup>2</sup> ) Weight 750gsm

## Specifications

<b>Name</b>	JutePro Thick.
<b>Material</b>	100% organic, biodegradable, high quality, long fibre Jute.
<b>Construction</b>	Central Hessian (3oz) scrim. Upper and lower layers of jute fibres are tightly needle-punched onto the scrim.
<b>Mass</b>	750 gsm (nominal)
<b>Density</b>	110-120Kg/m <sup>3</sup> (nominal)
<b>Weight</b>	35kg per roll (nominal)
<b>Pinning rate</b>	3 - 4 pins per m <sup>2</sup>
<b>Dimensions</b>	1.83m x 25m (45.74m <sup>2</sup> )



## Supply

JutePRO Thick can be supplied as individual rolls or purchased as a palletised pack for cost efficiency.

**Example:**  
Double stacked pallets for a total of 18 rolls, 1.8m x 1.2 x 2.3m



## Steel Pins

<b>PIN15COB</b>	Cobber Pin 15cm	1000pk
<b>PIN10HD</b>	PIN 100x30x100mm Flat top 4mm	150pk
<b>PIN15HD</b>	PIN 150x30x150mm Flat top 4mm	150pk
<b>PIN20HD</b>	PIN 200x30x200mm Flat top 4mm	150pk
<b>PIN30HD</b>	PIN 300x30x300mm Flat top 4mm	150pk

Other pin sizes by request including irrigation and galvanized.





# Erosion Control

## Soil Saver: Jute Mesh

Soil Saver is a loose jute cargo net style mesh. Its open structure allows grass and vegetation growth through, while providing erosion control and a microclimate for seed germination.

This open net can be draped over existing vegetation eg on sand dunes where it will capture sand and native seeds. Ideal for use on earthwork sites, slopes, coastal environments, swale drains and riverbank environments.

<b>SOILS500ROLL</b>
Soil Saver 1.22m x 68.5m Roll (83.5m <sup>2</sup> ) 500gsm 28 Rolls per pallet

<b>SOILS500BALE</b>
JuteMesh bale 1.2mx549m (658m <sup>2</sup> )



## The CoirPro Range

Coir (coconut fibre) is ideal for products like erosion control and vegetation establishment geotextiles and silt berms. Coir has a high lignin content that gives it a 'woody' characteristic which enables it to cope with high-energy water flows with a long degradation period of 3-5 years.

### CoirPro Mesh

CoirPro mesh is a durable long-lasting ground cover matting. Its open structure allows grass and vegetation to grow through, while providing erosion control and a microclimate for seed germination. Ideal for use in wetlands, slope revegetation up to 1:1 grade, swale drains, sand dunes and riverbank environments.

<b>COIRPROM400</b>	CoirPro Mesh Roll - 2m wide x 50m Roll (100m <sup>2</sup> ) 400gsm
<b>COIRPROM700</b>	CoirPro Mesh Roll - 2m wide x 25m Roll (50m <sup>2</sup> ) 700gsm
<b>COIRPROM900</b>	CoirPro Mesh Roll - 2m wide x 25m Roll (50m <sup>2</sup> ) 900gsm



### CoirPro Matting

Biodegradable CoirPROmat is ideal for immediate surface protection and erosion control until vegetation is established. Its open structure allows grasses and vegetation to emerge through the matting while providing longer term soil erosion control. CoirPROmat is made from coir fibre stitched together with jute and cotton threads.

<b>COIRPROMAT300</b>	CoirPro Matting Roll - 2.4m wide x 50m Roll (120m <sup>2</sup> ) 300gsm
<b>COIRPROMAT450</b>	CoirPro Matting Roll - 2.4m wide x 50m Roll (120m <sup>2</sup> ) 450gsm



# Erosion & Sediment Control

## CoirPro Logs

CoirPro logs are a robust, long life coir fibre berm. Ideal for erosion control in wetlands, river and coastal environments, drainage lines, steep slopes and for ash control after bush fires. Coir logs can also be used for sediment entrapment, wave and wind protection.

- Coir naturally breaks down for environmentally sensitive areas
- The robust coir fibre is ideal for the use in riparian environments, river banks, streams
- Coir logs are an alternative to rip rap and other coastal shoreline structures
- Steep slopes and gullies
- Open swale drains along roads where water and sediment can be captured
- For use in landscape rehydration projects as Leaky weirs, slowing streams and balancing flows
- Soil stockpiles, building sites, gutters and footpaths.

<b>COIRPROLR220</b>	CoirPro Round coir log 2m long x 20cm Dia
<b>COIRPROLR230</b>	CoirPro Round coir log 2m long x 30cm Dia
<b>COIRPROLR320</b>	CoirPro Round coir log 3m long x 20cm Dia
<b>COIRPROLR330</b>	CoirPro Round coir log 3m long x 30cm Dia
<b>COIRPROLT225</b>	CoirPro Triangle coir log 2m long x 25cm sides



# Treeguards

## Carton Treeguards

Biodegradable (Certified) option available

<b>MILK1</b>	1lt Treeguard - 70 x 70 x 385mm - White	300pk
<b>MILK2</b>	2lt Treeguard - 95 x 95 x 300mm - White	250pk
<b>MILK2B</b>	2lt Biodegradable Tree Guard - 95 x 95 x 300mm - White	250pk

Carton tree guards offer an economical, user-friendly solution for protecting young trees. They are simple to set up and provide effective defense against small browsers, helping ensure the survival and healthy growth of new plantings. Ideal for conservation and reforestation projects, these guards are both cost-effective and practical.





# Treeguards



## Ekidna Steel Guard

Ekidna steel mesh with spike barrier for large animal protection.

- Flat packed to enable efficient freight and transport to project sites with up to 200 on a single pallet
- Fast to install – about 10 minutes per plant
- Long lasting and reusable
- Guard sheets can be joined to create different configurations of guard size

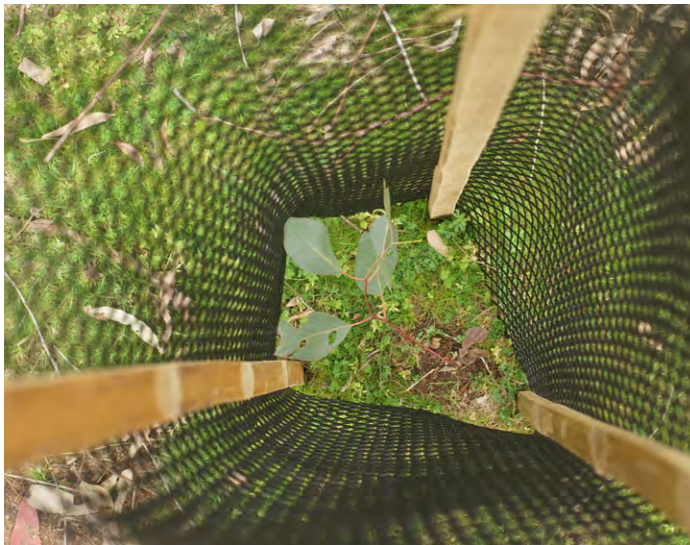
TGMSHEK1145	MESH EKIDNA 114.5cm tall	1
TGMSHEK1700	MESH EKIDNA - 170cm tall	1



## Mesh Guard

Black Diamond

TGMSH45	Mesh guard 45cm X 40cm (laid flat)	100pk
TGMSH60	Mesh guard 60cm X 40cm (laid flat)	100pk
TGMSH90	Mesh guard 90cm X 40cm (laid flat)	100pk
TGMSH120	Mesh guard 120cm X 40cm (laid flat)	100pk



# Treeguards

## KONKA Steel guards

The ultimate protection solution for your projects!

Our KONKA guards come in four versatile heights (1500mm, 1200mm, 900mm, and 600mm) and a flat width of 1140mm, perfect for various plant sizes and locations.

With built-in 50mm joining wires, installation is a breeze, ensuring a strong, uniform connection in no time.

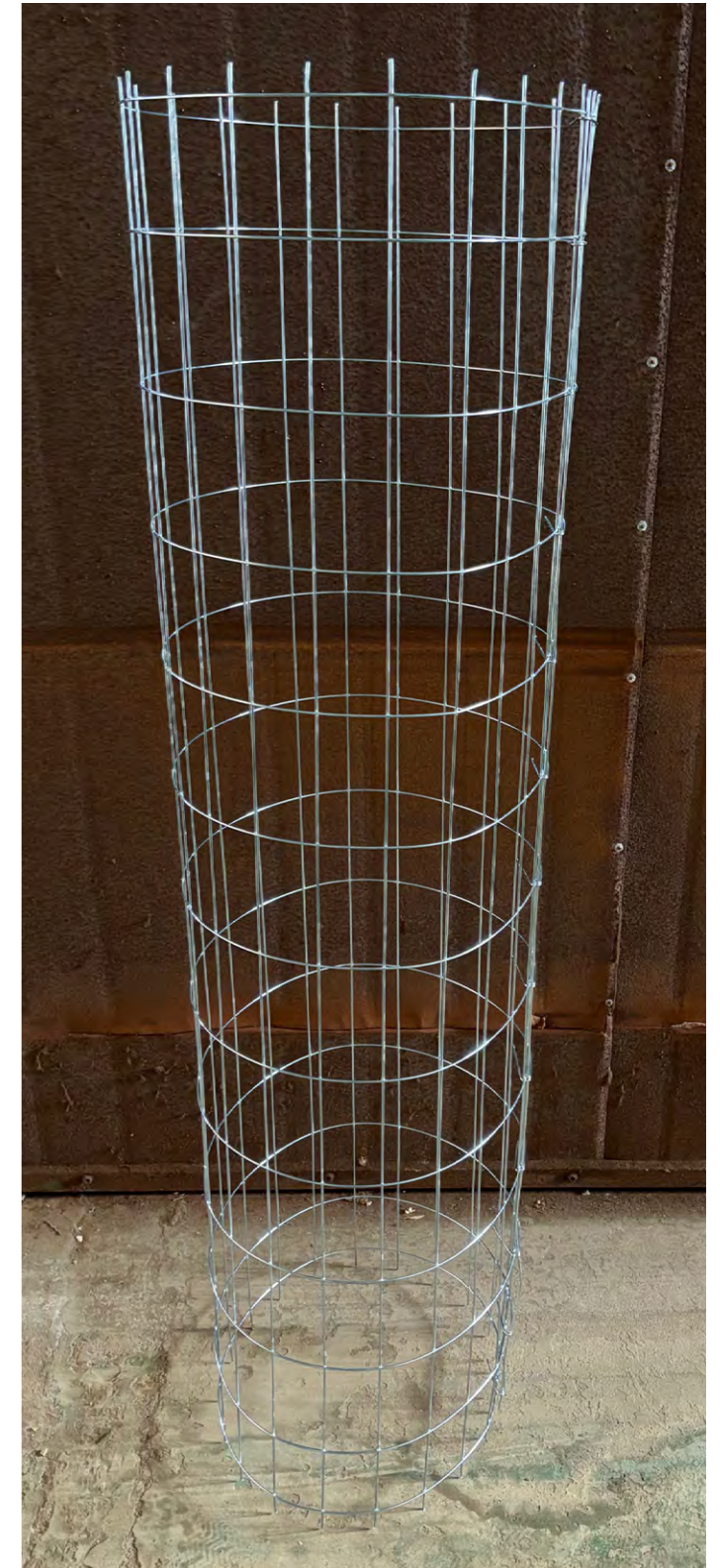
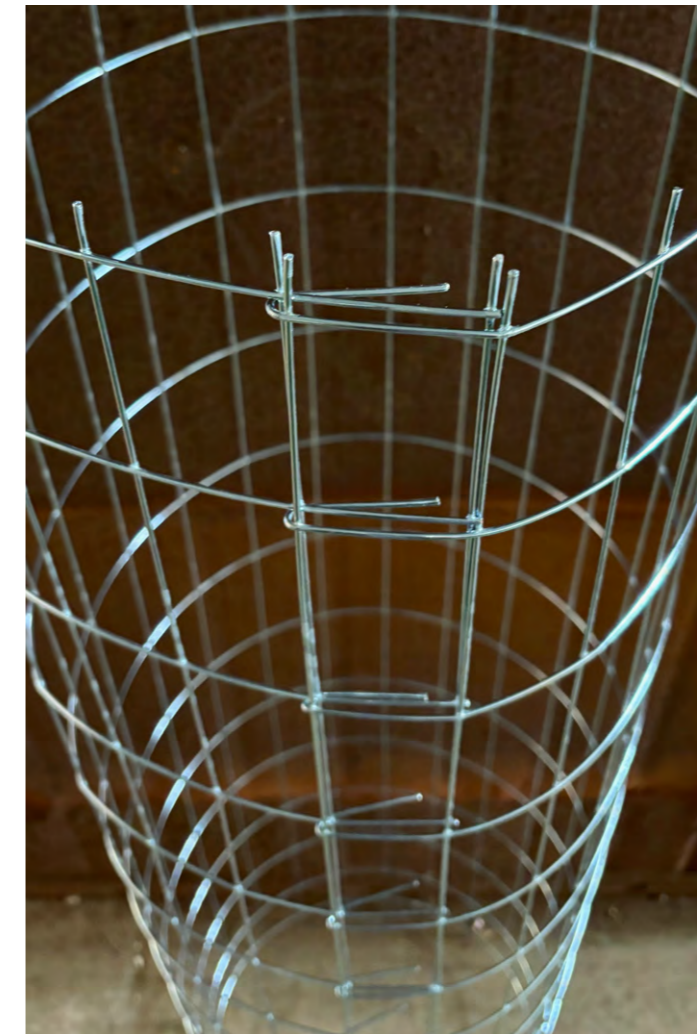
Crafted from heavy-duty 2mm wire, each guard is galvanized post-welding, protecting every weld join from corrosion and extending the guard's life in the field.

The design includes 25mm spikes at one end. These can be pushed into the ground giving added stability or contouring on uneven ground. Conversely the 25mm spikes can be at the top, making it uncomfortable for browsing animals attempting to access the plant.

Whether you're working on erosion control, biodiversity enhancement, or habitat restoration, KONKA guards offer reliable, long-lasting protection for your young trees and shrubs.

## KONKA guard

KONKA600	600x1140mm	1
KONKA900	900x1140mm	1
KONKA1200	1200x1140mm	1
KONKA1500	1500x1140mm	1





# Seasol & Planting Tools



## Seasol Range

<b>Sea5L</b> <b>Sea20L</b> Available in 5 or 20L	Seasol Commercial Concentrate is a 100% liquid seaweed plant conditioner that provides a synergistic range of natural compounds, trace elements, alginates and carbohydrates from a blend of brown kelps. Seasol promotes root growth, and improves plant tolerance to environmental and climatic stress. By promoting root growth, Seasol also has the effect of enhancing fertiliser efficiency.
<b>Power5</b> <b>Power20</b> Available in 5 or 20L	PowerFeed is a fortified fish fertiliser, that is blended with liquid humate to produce a highly efficient complementary liquid feed with dual action benefits for plant growth and soil condition.
<b>Seawetter5</b> <b>Seawetter20</b> Available in 5 or 20L	Seasol Soil Wetter is a soil treatment that allows the water to get in and stay in the ground, maximising the water usage. It is specially formulated with surfactants to modify wettability of hydrophobic soils and increase water-holding capacity. Boosted with kelp and humate to stimulate root growth and improve plant access to water and nutrients.
<b>Earthcare10</b> <b>Earthcare25</b> Available in 10 or 25kg	Earthcare Water Crystals, when incorporated into a soil or potting media, absorb and retain large quantities of water and water-soluble nutrients. Unlike most products that become hydrated, Water Crystals are able to release the absorbed water and nutrients, thereby allowing the plant to have water and nutrients available as needed.
<b>Earthcarepg10</b> Available in 10kg	Earthcare Planting Gel delivers a scientifically formulated blend of Seasol and power-fish from semi-hydrated water crystals, directly into the root zone of plants & turf to increase survival rates after transplanting.

## Pottiputki

<b>POT45</b>	Pottiputki 45mm planting tool
<b>POT55</b>	Pottiputki 55mm planting tool
<b>POT63</b>	Pottiputki 63mm planting tool
<b>POT75</b>	Pottiputki 75mm planting tool
<b>POTBELT</b>	Pottiputki Planting Belt
<b>POTHARNES</b>	Pottiputki Planting Belt Harness
<b>POTKIDNEY</b>	Pottiputki Kidney Tray with Straps

## Hamilton Tree Planter

<b>HTP40R</b>	Hamilton Tree Planter 40-50mm Small Round, Hiko, Used for planting tube stock grown in Hiko forestry tubes.
<b>HTP40SQ</b>	Hamilton Tree Planter 40-70mm Square Forestry Tube, Used for planting tube stock grown in 50mm square forestry tubes
<b>HTP80R</b>	Hamilton Tree Planter 80-90mm Large Round, Used for planting tube stock grown in 80mm round tubes



# STA Logger

The STA logger is an automated GPS and data logging attachment designed to integrate with your existing weed control tools.

## About the STA logger

A weed control solution designed for recording the metrics that are important to the forestry, land management and conservation industries.

You'll see where your weed control team has been, where they sprayed and can quickly analyse the patterns with a simple and easy to use reporting system. It's so easy, field operators simply clip it on and forget it's there.

Control is back in your hands with an efficient way of collating your data, reducing any operators' inefficiencies and improving reporting to clients, funding bodies and management.

## Why the STA logger matters

### Simplicity of use

Field operators don't need to do anything. Once fitted, it is entirely automatic in its data collection and processing. Let your field operators do what they are best at and let the STA logger get you the data you need.

### Ease of reporting

Your reports have never been easier with analytics and map production available through browser interface with no technical ability required.

### Efficiency

There's no handling or processing of GPS files and it requires no manual intervention of any kind (other than charging a unit's battery) making all your weed management operations highly efficient.

### Field viewing of data

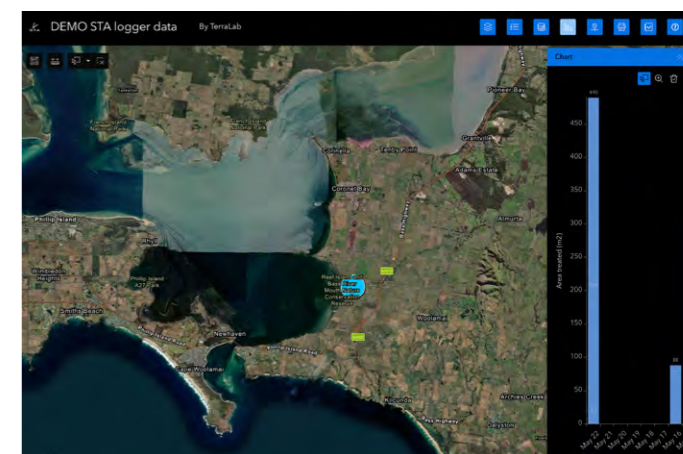
Allow your operators to use Esri supported mobile apps in the field to navigate to infestations and locate weeds. iOS, Android and Windows are all supported.

### Designed for the land management industry

Unlike other devices that are designed for general purpose or agricultural use, the STA logger is designed for recording and reporting the weed control metrics that are important to forestry, land management and conservation industries.

### Integrate into your GIS

If your organisation or client uses GIS, they can add the data as a layer (without download) for advanced analysis or map production.



To order & find out more visit: [stallogger.com](http://stallogger.com)

Receive the 2nd years subscription FREE (One device) when use our Discount code. Ask us for the order form!



# Recent community collaboration



**Upper Ovens Landcare looking after local trees**

By LEAN ANDERSON HERE

UPPER Ovens Landcare may be looking after a new range of tree and shrub species in the region, this winter. For those who enjoy the region, the Upper Ovens Landcare group is looking after the trees and shrubs that are planted in the region.

The group's 2023-24 strategy, developed by the Upper Ovens Landcare group, was developed in the month of the local Landcare group and had a recent announcement to them off the ground.

Upper Ovens Landcare group's 2023-24 strategy will focus on the local tree and shrub species that are being planted, and the group will be looking after the trees and shrubs that are planted in the region.

"It's a difficult project to develop, but we're happy to see it come to fruition," said the group's chair, Leanne. "We're looking after the trees and shrubs that are planted in the region, and we're looking after the trees and shrubs that are planted in the region."

The group's 2023-24 strategy will focus on the local tree and shrub species that are being planted, and the group will be looking after the trees and shrubs that are planted in the region.

"We're looking after the trees and shrubs that are planted in the region, and we're looking after the trees and shrubs that are planted in the region."

The group's 2023-24 strategy will focus on the local tree and shrub species that are being planted, and the group will be looking after the trees and shrubs that are planted in the region.

"We're looking after the trees and shrubs that are planted in the region, and we're looking after the trees and shrubs that are planted in the region."



For more information (03) 9555 5500  
[info@globalgreen.com.au](mailto:info@globalgreen.com.au)  
[www.globalgreen.com.au](http://www.globalgreen.com.au)

