

Revegetation & Erosion Control Product Range

Global Green is an Australian company dedicated to designing and manufacturing innovative products to protect the environment, support revegetation and erosion control.

SPRING | SUMMER



For more information (03) 9555 5500
info@globalgreen.com.au
www.globalgreen.com.au

Globalgreen
environmental

Globalgreen Environmental

Pioneers in Sustainable Solutions

Globalgreen Environmental is a leader in sustainable land management solutions, dedicated to addressing and mitigating environmental challenges faced by communities, local governments, and organisations across Australia. Globalgreen has created and supplies eco-friendly products that foster biodiversity, prevent soil erosion, and support land rehabilitation. Combining science-backed solutions with a commitment to environmental stewardship, Globalgreen has established itself as a trusted partner in the environmental sector.

Our Mission and Vision

Globalgreen's mission is to make a positive environmental impact by developing products that contribute to a healthier, greener planet. With practical tools and resources, Globalgreen empowers communities and organisations to restore and protect ecosystems, increase biodiversity, and create a lasting legacy of sustainability. Its vision revolves around thriving local ecosystems, supported by sustainable practices that benefit both people and the environment. From coastal restoration and bushland regeneration to urban revegetation, Globalgreen offers products adaptable to diverse landscapes and climates.

Comprehensive Product Range

Globalgreen Environmental offers products carefully designed for ecological restoration, including:

- **JutePro Erosion Control Matting:** Biodegradable matting that prevents soil erosion, protects waterways, and stabilises slopes.
- **GreenPOD Enviro Seedling Guards:** Biodegradable guards that support young plants and enhance soil health.
- **BamPRO Sawn Bamboo:** strong, flexible and long lasting Hardwood stake alternative..

Expertise and Commitment to Sustainability

With years of experience and a strong commitment to sustainable practices, Globalgreen collaborates with environmental scientists, ecologists, and local councils to ensure high standards of environmental responsibility. By prioritising natural materials and eco-friendly design, Globalgreen supports landscape rehabilitation while reducing synthetic waste. Products are tested to meet quality and environmental standards.

Partnering and collaboration

Globalgreen partners with local governments, Landcare groups, and community organisations across Australia. Its services, from personalised consultations and site visits to sample products and assessments, enable tailored solutions for each project. Through these collaborations, Globalgreen actively supports projects that protect and revitalise landscapes for future generations.

Globalgreen Environmental is committed to advancing sustainability and ecological resilience. With a broad product range and a strong foundation in environmental science, Globalgreen is prepared to meet Australia's evolving environmental conservation challenges, one project at a time.



How to Order from Globalgreen Environmental

Ordering from Globalgreen Environmental is designed to be simple, efficient, and tailored to the unique needs of your environmental projects. As a leading provider of sustainable land management solutions, we aim to make the purchasing process seamless, whether you're sourcing erosion control, revegetation, or habitat restoration products. Our team is ready to assist you with selecting the best options to achieve your goals while supporting ecological sustainability.

Step 1: Explore Our Product Range

To begin, visit our website at www.globalgreen.com.au, where you'll find detailed information on our eco-friendly product line.

Each product page provides specifications, benefits, and ideal use cases, helping you make an informed decision. For larger projects or unique environmental needs, reach out to our team for a personalised recommendation.

Step 2: Request a Quote or Sample

Once you've identified the products that best fit your project, you can request a quote directly through our website or by contacting our customer service team at **03 9555 5500** or info@globalgreen.com.au. If you're interested in assessing the product quality before ordering, samples of certain items, like our JutePro Matting and GreenPOD Seedling Guards, can be provided upon request. This allows you to see firsthand how our products perform in your specific environment.

Step 3: Place Your Order

After reviewing the quote and determining your needs, you can proceed with your order. Our team will confirm the product quantities, shipping details, and timelines to ensure your project is supplied promptly. Globalgreen strives to provide flexible order options, accommodating both small-scale orders for trial projects and large-scale shipments for extensive land rehabilitation.

Step 4: Delivery and Ongoing Support

Globalgreen coordinates delivery to your specified site, ensuring that your products arrive securely and on schedule. If you have questions about product installation or maintenance, our team offers ongoing support to help you maximise the impact of your investment in environmental solutions.

Partnering for Success

At Globalgreen, we value collaboration. Should you need a site assessment or project consultation, we're available to help. From placing an initial order to implementing our solutions on the ground, we are committed to providing you with the tools and guidance needed to achieve sustainable, effective results. To get started, contact us at **03 9555 5500** or visit www.globalgreen.com.au for more information on ordering and product availability.

Revegetation

greenPOD: Paper Treeguard

greenPOD – the natural way to protect and grow healthy seedlings

- Made from heavy duty, 100% recycled paper board, greenPOD doesn't have plastic coatings, so it protects the surrounding environment
- Life expectancy of 18 months+, recycled paper breaks down during growth of seedling
- greenPOD's natural colour reduces the visual impact
- greenPOD shelters seedling from intense weather and heat fluctuations yet provides the perfect growing environment
- Simple and easy to install
- Protects from browsing animals and herbicide spray.

| | | |
|---------------------|----------------------------------------------------|------|
| GREENPOD330 | greenPOD Paper treeguard - 330mm high x 105mm dia | 50pk |
| GREENPOD400 | greenPOD Paper treeguard - 400mm high x 137mm dia | 25pk |
| GREENPOD450 | greenPOD Paper treeguard - 450mm high x 170mm dia | 25pk |
| GREENPOD600 | greenPOD Paper treeguard - 600mm high x 210mm dia | 25pk |
| GREENPOD1000 | greenPOD Paper treeguard - 1000mm high x 210mm dia | 10pk |
| GREENPOD1200 | greenPOD Paper treeguard - 1200mm high x 260mm dia | 10pk |



greenMAT: Weedmats

GreenMAT weedmat, made from recycled paper. Designed with a central slit, and liftable flap for easy use for the plant and slots for stake positions. Much like the Jute option below.

| | | |
|--------------------|--------------------------------------|------|
| GREENMAT220 | Greenmat 220x22mm Recycled paper | 50pk |
| GREENMAT365 | Greenmat 365x330mm Recycled paper | 25pk |



JutePro Weedmats

Biodegradable weedmats made from jute. Designed with a central slit for the plant and 3 slots for stake positions. All 750gsm weight.

| | | |
|-------------------|---------------------------------|-------|
| JUTEPRO225 | JutePRO Weedmats 225mm x 225mm | 100pk |
| JUTEPRO370 | JutePRO Weedmats 370mm x 370mm | 100pk |
| JUTEPRO600 | JutePRO Weedmat - 600mm x 600mm | 50pk |
| JUTEPRO900 | JutePRO Weedmat - 900mm x 900mm | 25pk |

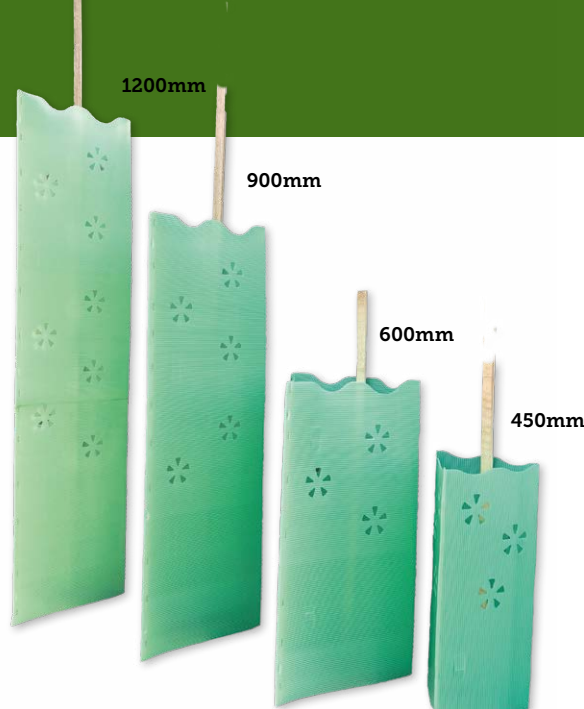


Revegetation

EZYGuard: Reusable Treeguard

Welded seam ready to pop open and insert stake. EZYguard's unique patented InstaLOCK clamps the stake secure to prevent spinning when using a normal hardwood stake, saving the cost of custom-made stakes as used on conventional flute guards.

Features an additional stake slot to secure the guard when using bamboo stake or in very high wind areas and potential animal rubbing.



Bamboo Stakes

| | | |
|------------|--------------------------------|-------|
| BAM4568 | Bamboo Stake 45cm 6-8mm dia | 500pk |
| BAM60810 | Bamboo Stake 60cm 8-10mm dia | 500pk |
| BAM601012 | Bamboo Stake 60cm 10-12mm dia | 250pk |
| BAM751012 | Bamboo Stake 75cm 10-12mm dia | 250pk |
| BAM901012 | Bamboo Stake 90cm 10-12mm dia | 250pk |
| BAM901113 | Bamboo Stake 90cm 11-13mm dia | 250pk |
| BAM1201012 | Bamboo Stake 120cm 10-12mm dia | 250pk |
| BAM1201214 | Bamboo Stake 120cm 12-14mm dia | 150pk |
| BAM1201416 | Bamboo Stake 120cm 14-16mm dia | 100pk |
| BAM1501012 | Bamboo Stake 150cm 10-12mm dia | 250pk |
| BAM1501214 | Bamboo Stake 150cm 12-14mm dia | 200pk |
| BAM1501416 | Bamboo Stake 150cm 14-16mm dia | 100pk |
| BAM1501618 | Bamboo Stake 150cm 16-18mm dia | 50pk |
| BAM2101618 | Bamboo Stake 210cm 16-18mm dia | 100pk |

| | | |
|--------------|-----------------------------|-------|
| EZYGuard450 | Treeguard 450Hx200mm sides | 100pk |
| EZYGuard600 | Treeguard 600Hx300mm sides | 100pk |
| EZYGuard900 | Treeguard 900Hx300mm sides | 25pk |
| EZYGuard1200 | Treeguard 1200Hx300mm sides | 25pk |

BamPro Stake

Stakes milled from large bamboo, sawn and pointed. Stakes have a hardwood stake profile as an alternative to the hardwood stakes.

| | | |
|--------------|---------------------------|-------|
| BAMPRO752010 | Bamboo Stake 75cm 20x10mm | 100pk |
| BAMPRO902010 | Bamboo Stake 90cm 20x10mm | 100pk |

| | | |
|---------------|----------------------------|------|
| BAMPRO751220 | Bamboo Stake 75cm 12x20mm | 25pk |
| BAMPRO751525 | Bamboo Stake 75cm 15x25mm | 25pk |
| BAMPRO901220 | Bamboo Stake 90cm 12x20mm | 25pk |
| BAMPRO901525 | Bamboo Stake 90cm 15x25mm | 25pk |
| BAMPRO1201525 | Bamboo Stake 120cm 15x25mm | 25pk |
| BAMPRO1351525 | Bamboo Stake 135cm 15x25mm | 25pk |
| BAMPRO1501525 | Bamboo Stake 150cm 15x25mm | 25pk |
| BAMPRO1801525 | Bamboo Stake 180cm 15x25mm | 25pk |



Hardwood Stakes

| | | |
|-----------|-------------------------------|------|
| HW752518 | Hardwood Stakes 75cm 25x18mm | 10pk |
| HW902518 | Hardwood Stakes 90cm 25x18mm | 10pk |
| HW1202518 | Hardwood Stakes 120cm 25x18mm | 10pk |
| HW2105050 | Hardwood Stakes 120cm 50x50mm | 1 |
| HW1352518 | Hardwood Stakes 135cm 25x18mm | 10pk |
| HW1502518 | Hardwood Stakes 150cm 25x18mm | 10pk |
| HW1503838 | Hardwood Stakes 150cm 38x38mm | 1 |
| HW1505050 | Hardwood Stakes 150cm 50x50mm | 1 |
| HW1803838 | Hardwood Stakes 180cm 38x38mm | 1 |
| HW1805050 | Hardwood Stakes 180cm 50x50mm | 1 |
| HW2103838 | Hardwood Stakes 210cm 38x38mm | 1 |
| HW2405050 | Hardwood Stakes 240cm 50x50mm | 1 |



Tree Ties

| | |
|-------------|--------------------------------|
| TIEJUTE530 | Jute tree tie 50mm x 30m roll |
| TIEPOLY5100 | Poly tree tie 50mm x 100m roll |



Erosion & Weed Control

JutePro: Thick-Mat

JutePro Thick is the robust weed and erosion control geotextile blanket made from natural Jute fibres. Jute (*Corchorus* spp.) is a plant found on the sub-continent and where it is sustainably farmed.

The superior grade of jute fibre is cleaner and improves the tensile strength of the matting, improving its performance on steep embankments and in storm events. Being denser, it provides good weed suppression, erosion control and moisture retention for better plant establishment and survival.

JutePro Thick is a roll out mulch barrier, providing weed suppression and moisture retention to enhance plant establishment, while protecting the topsoil from erosion.

JutePro Thick is made from selected, long clean Jute fibres to add strength and longevity.

JutePro is 100% organic and biodegrades over time.

Application

Natural mulch mat for weed and erosion control, ideal for:

- Slopes up to 1:1 grade
- Roadsides and open spaces
- Revegetation areas and garden beds
- Wetlands, Ephemeral zones, and riparian batters
- Coastal and high wind sites
- Water velocities up to 1.8 metres per second

Product Range

| | |
|----------------------|------------------------------------------------------------------------------------------|
| JUTEPROTM750S | JutePro Thick-mat Roll - slit 1.83wide x 25m long (45.75m ²) Weight 750gsm |
| JUTEPROTM750 | JutePro Thick-mat Roll - unslit 1.83wide x 25m long (45.75m ²) Weight 750gsm |

Specifications

| | |
|---------------------|---------------------------------------------------------------------------------------------------------------|
| Name | JutePro Thick. |
| Material | 100% organic, biodegradable, high quality, long fibre Jute. |
| Construction | Central Hessian (3oz) scrim. Upper and lower layers of jute fibres are tightly needle-punched onto the scrim. |
| Mass | 750 gsm (nominal) |
| Density | 110-120Kg/m ³ (nominal) |
| Weight | 35kg per roll (nominal) |
| Pinning rate | 3 - 4 pins per m ² |
| Dimensions | 1.83m x 25m (45.74m ²) |



Supply

JutePRO Thick can be supplied as individual rolls or purchased as a palletised pack for cost efficiency.

Example:

Double stacked pallets for a total of 18 rolls, 1.8m x 1.2 x 2.3m



Steel Pins

| | | |
|-----------------|-------------------------------|--------|
| PIN15COB | Cobber Pin 15cm | 1000pk |
| PIN10HD | PIN 100x30x100mm Flat top 4mm | 150pk |
| PIN15HD | PIN 150x30x150mm Flat top 4mm | 150pk |
| PIN20HD | PIN 200x30x200mm Flat top 4mm | 150pk |
| PIN30HD | PIN 300x30x300mm Flat top 4mm | 150pk |

Other pin sizes by request including irrigation and galvanized.



Erosion Control

Soil Saver: Jute Mesh

Soil Saver is a loose jute cargo net style mesh. Its open structure allows grass and vegetation growth through, while providing erosion control and a microclimate for seed germination.

This open net can be draped over existing vegetation eg on sand dunes where it will capture sand and native seeds. Ideal for use on earthwork sites, slopes, coastal environments, swale drains and riverbank environments.

| |
|--------------------------------------------------------------------------------|
| SOILS500ROLL |
| Soil Saver 1.22m x 68.5m Roll (83.5m ²) 500gsm 28 Rolls per pallet |
| SOILS500BALE |
| JuteMesh bale 1.2mx549m (658m ²) |



The CoirPro Range

Coir (coconut fibre) is ideal for products like erosion control and vegetation establishment geotextiles and silt berms. Coir has a high lignin content that gives it a 'woody' characteristic which enables it to cope with high-energy water flows with a long degradation period of 3-5 years.

CoirPro Mesh

CoirPro mesh is a durable long-lasting ground cover matting. Its open structure allows grass and vegetation to grow through, while providing erosion control and a microclimate for seed germination. Ideal for use in wetlands, slope revegetation up to 1:1 grade, swale drains, sand dunes and riverbank environments.

| | |
|--------------------|--------------------------------------------------------------------|
| COIRPROM400 | CoirPro Mesh Roll - 2m wide x 50m Roll (100m ²) 400gsm |
| COIRPROM700 | CoirPro Mesh Roll - 2m wide x 25m Roll (50m ²) 700gsm |
| COIRPROM900 | CoirPro Mesh Roll - 2m wide x 25m Roll (50m ²) 900gsm |



CoirPro Matting

Biodegradable CoirPROmat is ideal for immediate surface protection and erosion control until vegetation is established. Its open structure allows grasses and vegetation to emerge through the matting while providing longer term soil erosion control. CoirPROmat is made from coir fibre stitched together with jute and cotton threads.

| | |
|----------------------|-------------------------------------------------------------------------|
| COIRPROMAT300 | CoirPro Matting Roll - 2.4m wide x 50m Roll (120m ²) 300gsm |
| COIRPROMAT450 | CoirPro Matting Roll - 2.4m wide x 50m Roll (120m ²) 450gsm |



Erosion & Sediment Control

CoirPro Logs

CoirPro logs are a robust, long life coir fibre berm. Ideal for erosion control in wetlands, river and coastal environments, drainage lines, steep slopes and for ash control after bush fires. Coir logs can also be used for sediment entrapment, wave and wind protection.

- Coir naturally breaks down for environmentally sensitive areas
- The robust coir fibre is ideal for the use in riparian environments, river banks, streams
- Coir logs are an alternative to rip rap and other coastal shoreline structures
- Steep slopes and gullies
- Open swale drains along roads where water and sediment can be captured
- For use in landscape rehydration projects as Leaky weirs, slowing streams and balancing flows
- Soil stockpiles, building sites, gutters and footpaths.



| | |
|---------------------|------------------------------------------------|
| COIRPROLR220 | CoirPro Round coir log 2m long x 20cm Dia |
| COIRPROLR230 | CoirPro Round coir log 2m long x 30cm Dia |
| COIRPROLR320 | CoirPro Round coir log 3m long x 20cm Dia |
| COIRPROLR330 | CoirPro Round coir log 3m long x 30cm Dia |
| COIRPROLT225 | CoirPro Triangle coir log 2m long x 25cm sides |



Treeguards

Carton Treeguards

Biodegradable (Certified) option available

| | | |
|---------------|--------------------------------------------------------|-------|
| MILK1 | 1lt Treeguard - 70 x 70 x 385mm - White | 300pk |
| MILK2 | 2lt Treeguard - 95 x 95 x 300mm - White | 250pk |
| MILK2B | 2lt Biodegradable Tree Guard - 95 x 95 x 300mm - White | 250pk |

Carton tree guards offer an economical, user-friendly solution for protecting young trees. They are simple to set up and provide effective defense against small browsers, helping ensure the survival and healthy growth of new plantings.

Ideal for conservation and reforestation projects, these guards are both cost-effective and practical.



Treeguards



Ekidna Steel Guard

Ekidna steel mesh with spike barrier for large animal protection.

- Flat packed to enable efficient freight and transport to project sites with up to 200 on a single pallet
- Fast to install – about 10 minutes per plant
- Long lasting and reusable
- Guard sheets can be joined to create different configurations of guard size

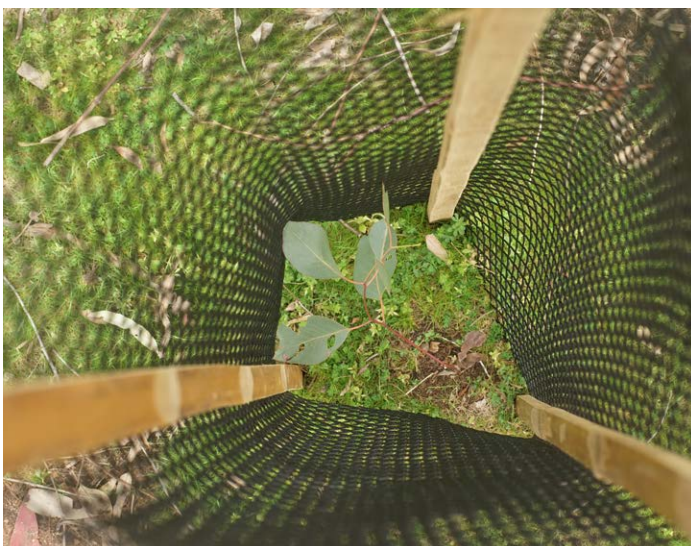
| | | |
|-------------|--------------------------|---|
| TGMSHEK1145 | MESH EKIDNA 114.5cm tall | 1 |
| TGMSHEK1700 | MESH EKIDNA - 170cm tall | 1 |



Mesh Guard

Black Diamond

| | | |
|----------|-------------------------------------|-------|
| TGMSH45 | Mesh guard 45cm X 40cm (laid flat) | 100pk |
| TGMSH60 | Mesh guard 60cm X 40cm (laid flat) | 100pk |
| TGMSH90 | Mesh guard 90cm X 40cm (laid flat) | 100pk |
| TGMSH120 | Mesh guard 120cm X 40cm (laid flat) | 100pk |



Treeguards

KONKA Steel guards

The ultimate protection solution for your projects!

The **KONKA Wire Mesh Tree Guard** by Global Green is a robust and versatile solution for protecting young trees and plants from wildlife and environmental threats. Engineered for durability and functionality, the KONKA Tree Guard is suitable for a wide range of applications in landscaping, revegetation, and natural resource management.

Material: 2mm galvanized wire mesh.

Mesh size: 100mm tall x 50mm wide

Joining: 35mm extended wires on side forming the integrated locking mechanism.

Tensile Strength: Designed to resist deformation from wildlife interference.

Mesh Coating: Galvanized post-welding to ensure long-lasting protection against rust, particularly at weld points.

KONKA guard

| | | | |
|-------------|-----------|-------------|-----|
| Small | KONKA600 | 600x1135mm | 1pk |
| Medium | KONKA900 | 900x1135mm | 1pk |
| Large | KONKA1200 | 1200x1135mm | 1pk |
| Extra Large | KONKA1500 | 1500x1135mm | 1pk |

Spiked Ends:

- **25mm Spikes** on one end provide dual functionality:
- Placing spikes at the **top** helps prevent animals from accessing the plant from the top.
- Spikes positioned at the bottom can be embedded into the ground to stabilize the guard and block vermin access.

Locking Mechanism:

- No tie wires required. **35mm Long Locking Wires** run down one side for easy and secure assembly, joining the mesh edges with minimal effort.

Durable Construction:

- Precision-welded mesh ensures strength, with galvanized coating extending the product's life in harsh environmental conditions.
- Tensile strength helps maintain the guards shape.

Versatility:

- KONKA is easily joined using the in-built locking wires to create larger diameter guards.
- Range of sizes for protecting all types of trees and shrubs from browsing animals.
- Economical and reuseable.



Seasol & Planting Tools

Seasol Range

| | |
|---------------------------------------------------------------------|----------------------------------------------------------------------------------------------------------------------------------------------------------------------------------------------------------------------------------------------------------------------------------------------------------------------------------------------------------------------------------------------------|
| Sea5L Sea20L Available in 5 or 20L | Seasol Commercial Concentrate is a 100% liquid seaweed plant conditioner that provides a synergistic range of natural compounds, trace elements, alginates and carbohydrates from a blend of brown kelps. Seasol promotes root growth, and improves plant tolerance to environmental and climatic stress. By promoting root growth, Seasol also has the effect of enhancing fertiliser efficiency. |
| Power5 Power20 Available in 5 or 20L | PowerFeed is a fortified fish fertiliser, that is blended with liquid humate to produce a highly efficient complementary liquid feed with dual action benefits for plant growth and soil condition. |
| Seawetter5 Seawetter20 Available in 5 or 20L | Seasol Soil Wetter is a soil treatment that allows the water to get in and stay in the ground, maximising the water usage. It is specially formulated with surfactants to modify wettability of hydrophobic soils and increase water-holding capacity. Boosted with kelp and humate to stimulate root growth and improve plant access to water and nutrients. |
| Earthcare10 Earthcare25 Available in 10 or 25kg | Earthcare Water Crystals, when incorporated into a soil or potting media, absorb and retain large quantities of water and water-soluble nutrients. Unlike most products that become hydrated, Water Crystals are able to release the absorbed water and nutrients, thereby allowing the plant to have water and nutrients available as needed. |
| Earthcarepg10 Available in 10kg | Earthcare Planting Gel delivers a scientifically formulated blend of Seasol and power-fish from semi-hydrated water crystals, directly into the root zone of plants & turf to increase survival rates after transplanting. |



Pottiputki

| | |
|------------------|------------------------------------|
| POT45 | Pottiputki 45mm planting tool |
| POT55 | Pottiputki 55mm planting tool |
| POT63 | Pottiputki 63mm planting tool |
| POT75 | Pottiputki 75mm planting tool |
| POTBELT | Pottiputki Planting Belt |
| POTHARNES | Pottiputki Planting Belt Harness |
| POTKIDNEY | Pottiputki Kidney Tray with Straps |

Hamilton Tree Planter

| | |
|----------------|----------------------------------------------------------------------------------------------------------------------|
| HTP40R | Hamilton Tree Planter 40-50mm Small Round, Hiko, Used for planting tube stock grown in Hiko forestry tubes. |
| HTP40SQ | Hamilton Tree Planter 40-70mm Square Forestry Tube, Used for planting tube stock grown in 50mm square forestry tubes |
| HTP80R | Hamilton Tree Planter 80-90mm Large Round, Used for planting tube stock grown in 80mm round tubes |



STA Logger

The STA logger is an automated GPS and data logging attachment designed to integrate with your existing weed control tools.

About the STA logger

A weed control solution designed for recording the metrics that are important to the forestry, land management and conservation industries.

You'll see where your weed control team has been, where they sprayed and can quickly analyse the patterns with a simple and easy to use reporting system. It's so easy, field operators simply clip it on and forget it's there.

Control is back in your hands with an efficient way of collating your data, reducing any operators' inefficiencies and improving reporting to clients, funding bodies and management.

Why the STA logger matters

Simplicity of use

Field operators don't need to do anything. Once fitted, it is entirely automatic in its data collection and processing. Let your field operators do what they are best at and let the STA logger get you the data you need.

Ease of reporting

Your reports have never been easier with analytics and map production available through browser interface with no technical ability required.

Efficiency

There's no handling or processing of GPS files and it requires no manual intervention of any kind (other than charging a unit's battery) making all your weed management operations highly efficient.

Field viewing of data

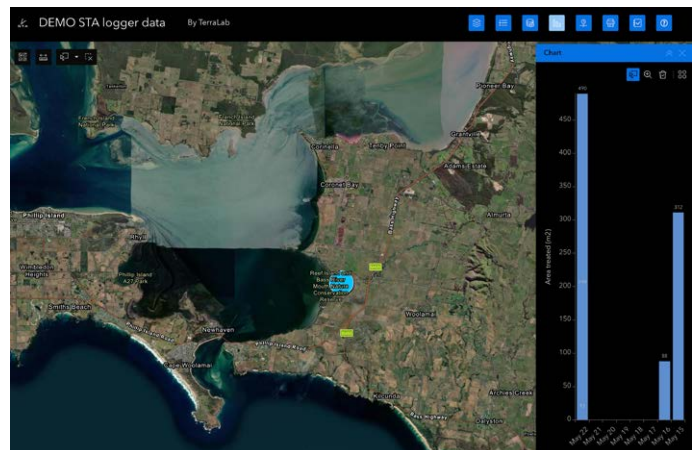
Allow your operators to use Esri supported mobile apps in the field to navigate to infestations and locate weeds. iOS, Android and Windows are all supported.

Designed for the land management industry

Unlike other devices that are designed for general purpose or agricultural use, the STA logger is designed for recording and reporting the weed control metrics that are important to forestry, land management and conservation industries.

Integrate into your GIS

If your organisation or client uses GIS, they can add the data as a layer (without download) for advanced analysis or map production.



To order & find out more
visit: stallogger.com

Receive the 2nd years subscription FREE (One device)
when use our Discount code.
Ask us for the order form!

